



Heartland Automotive Apprenticeship Program

Our approach to staffing is your path to success

PROGRAM OVERVIEW



The biggest challenge for the automotive repair industry currently is a lack of trained technicians.

At Heartland Automotive Services we decided not to settle for adequate but to train excellence.

Our one year apprenticeship program will give our trainees a foundation for future growth and the certifications necessary for a successful automotive career

Heartland's
Apprenticeship
program
provided by



In our online **Automotive Mechanic Classes**, you'll learn the skills and industry knowledge to take the next steps toward starting your career as an auto mechanic. After completing your program, you'll receive vouchers for two ASE certification practice tests so you can prepare to become certified.

Auto Mechanic Classes

12 courses

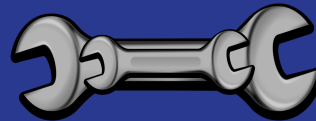
49.4 continuing education units
(CEUs)

31 exams

Estimated completion time:

Fast track = 4 months

Average time = 12 months



TRAINING PLAN

Training module 1

Fundamentals of Auto repair. Systems and Theory

- Starting Your Program
- Introduction to Auto Repair
- Automotive Repair Foundations

Training module 2

Component level repair

- Engine Repair
- Electrical and Electronic Systems
- Heating, Ventilation, and Air Conditioning
- Engine Performance

Training module 3

Component level repair

- Automotive Brakes
- Suspension and Steering
- Manual Drive Train
- Automatic Transmissions and Transaxles

WHAT WE PROVIDE

Laptop + Curriculum

Heartland Automotive will deduct the monthly costs from your paycheck but we will apply an offsetting credit to your paycheck as long as you have less than three points accumulated in the attendance point system.

Basic Tools + Shop

Basic hand tools and a fully equipped shop will be provided and all apprentices that successfully complete the program and pass the ASE tests will be allowed to keep the tools as a gift from Heartland Automotive

Supervised OJT

While training in the shop you will be paid the flat rate for repairs and maintenance you complete. You will work under the direct supervision of an ASE Master Technician and they will be your OJT trainer.

STARTING WAGE

AFTER COMPLETION
OF MODULE 1

AFTER COMPLETION
OF MODULE 3

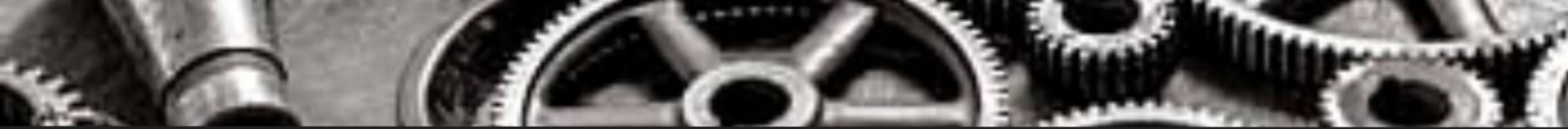


AFTER 30 DAYS WITH
SATISFACTORY
REVIEW

AFTER COMPLETION
OF MODULE 2



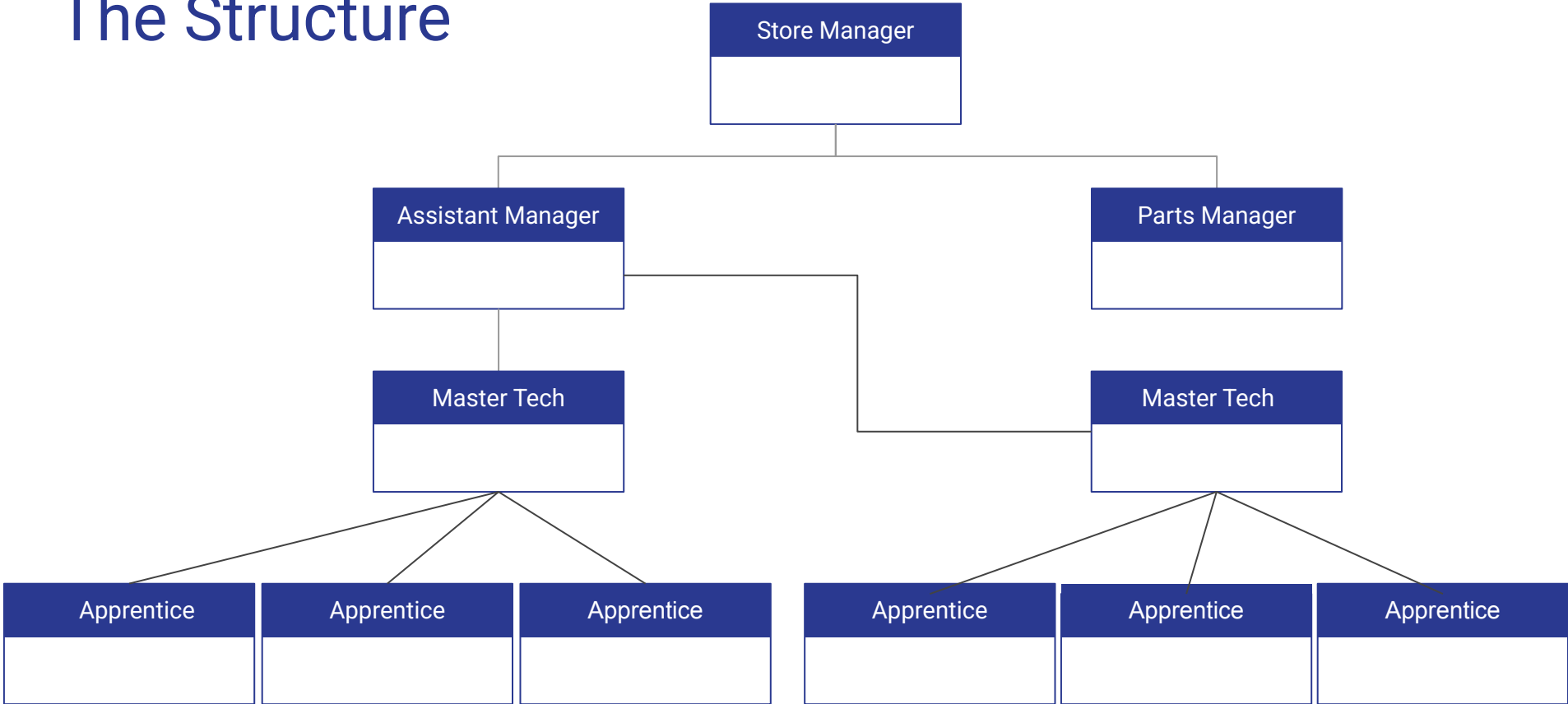
WHAT IS A FLAT RATE HOUR?



A flat rate hour is the time the repair manual lists the task should take to be completed. A typical automotive flat rate for an alternator replacement is around 2 hrs of labor. If it takes you an hour you still flag the 2 hours but the same goes if it takes you 3 hrs. You will only be paid the 2 hrs



The Structure





SUMMIT 45
RACING EQUIPMENT
10 THOUS OF PERFORMANCE

Key N
HIGH-FLOWING FLUIDS

www.alphard.de

